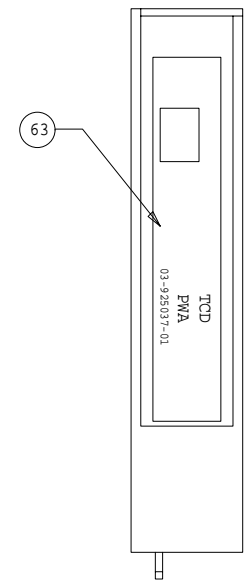
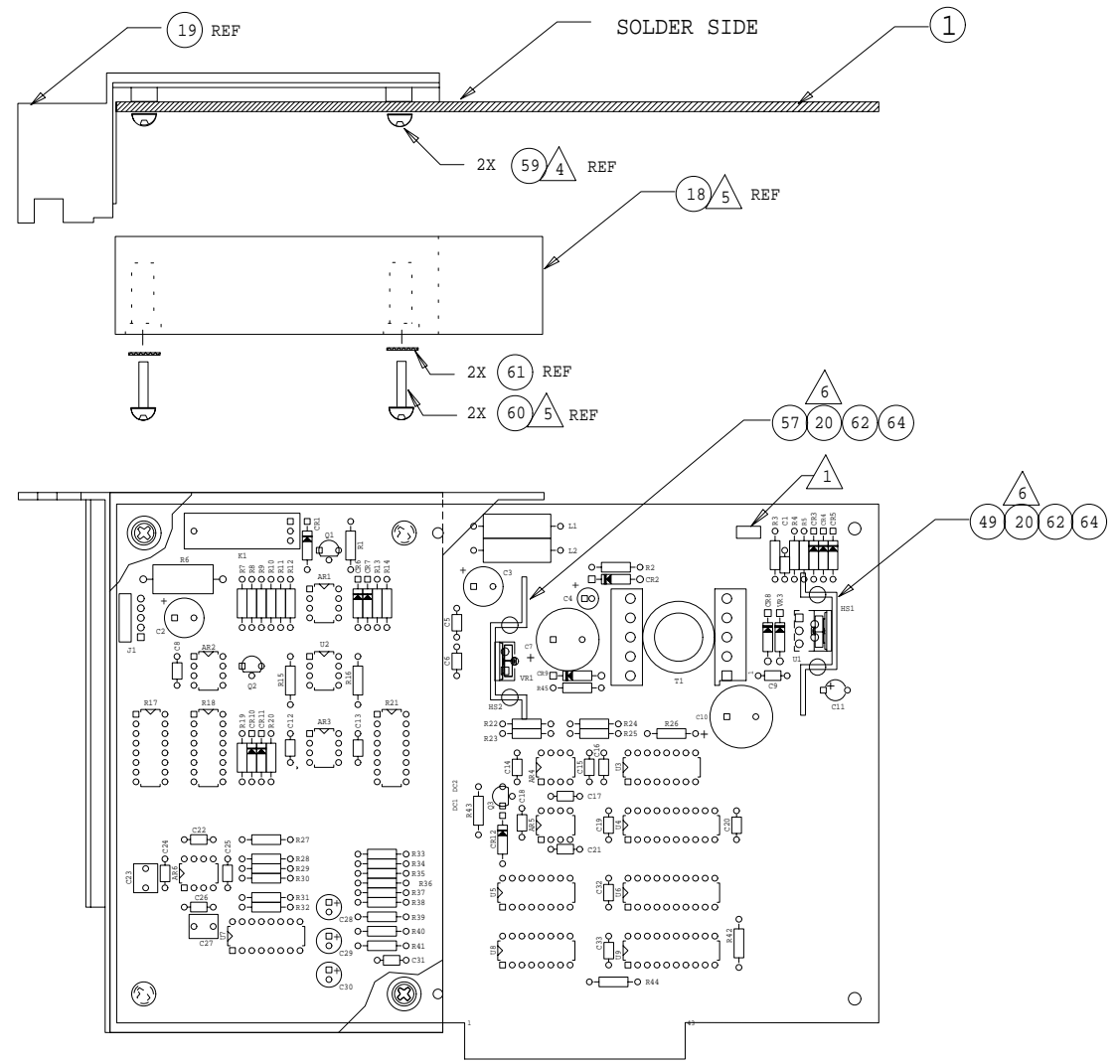


△ 5 STEP 1

△ 4 STEP 2



SHT 1 OF 3  
SHT 2 AND 3 ARE "A" SIZE

- 7. FOR FAB DWG SEE 03-925038-00, FOR PART SEE 03-925038-01.
- △ 6 MOUNTING CLIPS ARE INCLUDED WITH HEATSINK (ITEM 20).
- △ 5. STEP 2 : INSTALL DETECTOR SHIELD COVER (ITEM 18) TO PWA USING 2 LONG SCREWS (ITEM 60) AND WASHERS (ITEM 61).
- △ 4. STEP 1 : INSTALL DETECTOR SHIELD BASE (ITEM 19) TO PWA USING 2 SHORT SCREWS (ITEM 59).

- 3. FOR A/W SEE 03-925039-00.
- 2. FOR SCHEM SEE 03-925040-00.
- △ 1. MARK CURRENT LEVEL REV IN AREA PROVIDED WITH PERMANENT TYPE NON-CONDUCTIVE BLACK INK.

NOTES: (UNLESS OTHERWISE SPECIFIED).

DO NOT SCALE DRAWING														
DESCRIPTION OF CHANGE	"C" RELEASE	VARIOUS CHANGES SEE ECO	ADDED LABEL TO SHIELD	OBSOLETE PART-ADJING	SEE ECO	"B" RELEASE	DRAWN		DATE		APPROVED			
							SAL TEDESCO		2-10-95		D. DEFORD		4-5-95	
							CHECKED		DATE		APPROVED			
							ST		11-10-95		D. DEFORD			
											F. FALLI			
											5-2-96			
							ASSY, PWA, TCD							
							NOT OTHERWISE SPEC: ANG*							
							<b>varian</b>							
							FULL		38		1 OF 3		D 03-925037-00	
							SCALE		DIV		SHEET		DRAWING NO	
													REV	
													CAD= PCAD	

PWA: TCD  
ASSEMBLY: 03-925037-01  
DATE: Mon 29-Apr-1996  
REV: 1

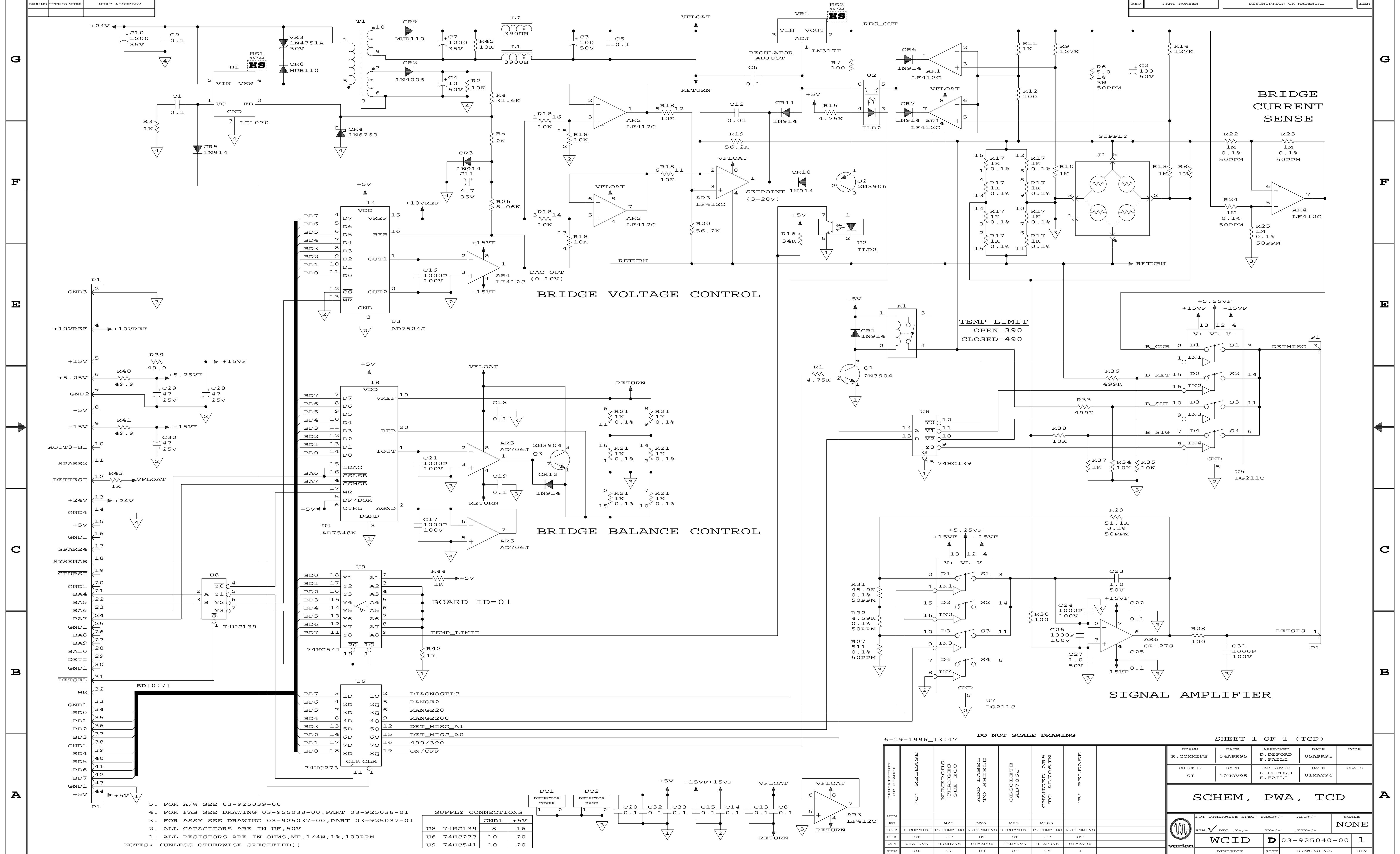
Sheet: 2 of 3

<u>Item</u>	<u>Ref Designator</u>	<u>Qty</u>	<u>Part Number</u>	<u>Part Description</u>
1		1	03-925038-01	FAB,PWA,TCD
2	AR1-4	4	62-601246-00	AMP,LF412CN,DUAL_OP-AMP
3	AR5	1	62-602966-00	AMP,AD706JN,DUAL_OP-AMP
4	AR6	1	62-602451-00	AMP,OP-27GP,OP-AMP
5	C1, C5-6, C8-9, C13-15, C18-20, C22, C25, C32-33	15	41-290010-00	CAP,0.1UF,50V,20%,CER,Z5U
6	C2-3	2	41-505838-00	CAP,100UF,50V,20%,AL.ELECT
7	C4	1	41-505840-00	CAP,10UF,50V,20%,AL.ELECT.
8	C7, C10	2	41-503937-00	CAP,1200UF,35V,20%,AL.EL,LO_ESR
9	C11	1	41-609401-00	CAP,4.7UF,35V,20%,TANT
10	C12	1	41-290017-00	CAP,0.01UF,50V,10%,CER,X7R
11	C16-17, C21, C24, C26, C31	6	41-290043-00	CAP,1000PF,100V,5%,CER,COG
12	C23, C27	2	41-764919-00	CAP,1.0U,50V,10%,MYLAR
13	C28-30	3	41-503914-00	CAP,47UF,25V,20%,AL.ELECT
14	CR1, CR3, CR5-7, CR10- 12	8	66-304148-00	DIODE,1N914_OR_1N4148
15	CR2	1	66-304006-00	DIODE,1N4006,600V,1A
16	CR4	1	66-306263-00	DIODE,1N6263,SCHOTTKY
17	CR8-9	2	66-393207-00	DIODE,MUR110,100V,1A,FAST_REC.
18	DC1	1	03-925202-01	SHIELD,COVER,DET,PWA
19	DC2	1	03-925201-01	SHIELD,BASE,DET,PWA
20	HS1-2	2	66-899999-00	HEATSINK,TO-220,TH6070B
21	J1	1	51-411263-00	CONN,5-PIN,MOLEX_0.100,R.A.
22	K1	1	72-569940-00	RELAY,REED,FORM_A
23	L1-2	2	43-300012-00	INDUCTOR,390UH,0.64A,MOLDED_CHOKE
24				
25	Q1, Q3	2	62-903904-00	XSTR,2N3904,NPN
26	Q2	1	62-903906-00	XSTR,2N3906,PNP
27	R1, R15	2	31-102278-00	RES,MF,4.75K,1/4W,1%,100PPM
28	R2, R34-35, R38, R45	5	31-102309-00	RES,MF,10.0K,1/4W,1%,100PPM
29	R3, R11, R37, R42-44	6	31-102213-00	RES,MF,1K,1/4W,1%,100PPM
30	R4	1	31-102357-00	RES,MF,31.6K,1/4W,1%,100PPM
31	R5	1	31-102242-00	RES,MF,2K,1/4W,1%,100PPM
32	R6	1	31-599716-00	RES,WW,5.0,3W,1%,50PPM

**PWA: TCD**  
**ASSEMBLY: 03-925037-01**  
**DATE: Mon 29-Apr-1996**  
**REV: 1**

Sheet: 3 of 3

<u>Item</u>	<u>Ref Designator</u>	<u>Qty</u>	<u>Part Number</u>	<u>Part Description</u>
33	R7, R12, R28, R30	4	31-102117-00	RES,MF,100,1/4W,1%,100PPM
34	R8, R10, R13	3	31-102501-00	RES,MF,1.00M,1/4W,1%,100PPM
35	R9, R14	2	31-102415-00	RES,MF,127K,1/4W,1%,100PPM
36	R16	1	31-102360-00	RES,MF,34K,1/4W,1%,100PPM
37	R17, R21	2	31-400319-00	RES,NET,DIP,1KX8,0.1%
38	R18	1	31-400013-00	RES,NET,DIP,10KX8,2%
39	R19-20	2	31-102381-00	RES,MF,56.2K,1/4W,1%,100PPM
40	R22-25	4	31-614756-00	RES,MF,1M,1/4W,0.1%,50PPM
41	R26	1	31-102300-00	RES,MF,8.06K,1/4W,1%,100PPM
42	R27	1	31-614755-00	RES,MF,511,1/4W,0.1%,50PPM
43	R29	1	31-614752-00	RES,MF,51.1K,1/4W,0.1%,50PPM
44	R31	1	31-614753-00	RES,MF,45.9K,1/4W,0.1%,50PPM
45	R32	1	31-614754-00	RES,MF,4.59K,1/4W,0.1%,50PPM
46	R33, R36	2	31-102472-00	RES,MF,499K,1/4W,1%,100PPM
47	R39-41	3	31-102088-00	RES,MF,49.9,1/4W,1%,100PPM
48	T1	1	03-925236-01	XFMR,TCD,(INELCO#74-P-99)
49	U1	1	62-603324-00	IC,LT1070HVCT,SWITCHING_REG
50	U2	1	66-590007-00	IC,ILD2,DUAL,OPTOTRAN
51	U3	1	62-601238-00	IC,AD7524JN,DAC_8_BIT
52	U4	1	62-602641-00	IC,AD7548KN,DAC_12_BIT
53	U5, U7	2	62-601723-00	IC,DG211CJ,QUAD_ANALOG_SW
54	U6	1	62-602007-00	IC,74HC273N
55	U8	1	62-601894-00	IC,74HC139N
56	U9	1	62-601815-00	IC,74HC541N
57	VR1	1	62-600876-00	IC,LM317T,ADJ_LINEAR_REG
58	VR3	1	66-314751-00	DIODE,1N4751A,ZENER,30V,5%,1W
59		2	12-901162-00	SCREW,PHIL,SEMS,6-32X1/4
60		2	12-222006-20	SCREW,PHIL,PH,6-32X1
61		2	14-312006-00	WASHER,EXT_LOCK,#6
62		2	13-312004-00	NUT,KEP,4-40,SST
63		1	03-925421-03	LABEL,DET,IDENTIFICATION
64		A/R	88-298900-00	HEATSINK-COMPOUND



5. FOR A/W SEE 03-925039-00  
 4. FOR FAB SEE DRAWING 03-925038-00, PART 03-925038-01  
 3. FOR ASSY SEE DRAWING 03-925037-00, PART 03-925037-01  
 2. ALL CAPACITORS ARE IN UF, 50V  
 1. ALL RESISTORS ARE IN OHMS, MF, 1/4W, 1%, 100PPM  
 NOTES: (UNLESS OTHERWISE SPECIFIED))

SUPPLY CONNECTIONS		
	GND1	+5V
U8 74HC139	8	16
U6 74HC273	10	20
U9 74HC541	10	20

6-19-1996\_13:47 DO NOT SCALE DRAWING SHEET 1 OF 1 (TCD)

DESIGNATION CIRCUIT	1-C RELEASE	NUMEROUS CHANGES SEE ECO	ADD LABEL TO SHIELD	OBSOLETE AD706J	CHANGED AS TO AD706JN	1-B RELEASE			
DRAWN	R.COMMINS	DATE	04APR95	APPROVED	D.DEFORD	DATE	05APR95	CODE	
CHECKED	ST	DATE	10NOV95	APPROVED	D.DEFORD	DATE	01MAY96	CLASS	

SCHEM, PWA, TCD

NOT OTHERWISE SPECI	FRAC +/-	ANG +/-	SCALE		
FIN	DEC	X +/-	.XX +/-	.XXX +/-	NONE
varian	WCID	D	03-925040-00	1	
DIVISION	SIZE	DRAWING NO.	REV		